

The Louvre Lounge



FlexiLouvre Electrical Guide

CONTENTS

1. Setting up the Control Unit	3-4
2. Remote and Rain Sensor Connection	5-6
3. Remote and Rain Sensor Disconnection	7
4. Rain Sensor Mounting Methods	8
5. Remote Button Uses	8
6. Motorised Blind Connection	9-10
7. Troubleshooting	11-13



ATTENTION: Read this instruction manual thoroughly before starting installation.

First of all, thank you for choosing Louvre Lounge to spice up your outdoor space. Please make sure you've thoroughly studied the instruction manual before starting installation.

If you have any questions during the installation process, please email us at help@louvrelounge.co.nz.

SETTING UP THE CONTROL UNIT

The control unit is the unit which is found within one of the posts of the louvre system. This control unit controls the motorisation and lighting functions of the louvre system and is powered by a single 220V plug.

Which Cables to use?

Depending on the louvre system purchased some or all cables will be used. For all motorised louvre systems, one or two of the “Motor” cables are required depending if your louvre system has 1 or 2 motors.

- For a louvre system which uses white lighting, please utilise both “DC 24V” cables.
- For a louvre system which uses RGB lighting, please utilise both “RGB” cables.
- If the louvre system includes motorisation, white lighting and RGB lighting, all cables will be used.

Note: The “DC 24V” and “RGB” cables are different. The correct one must be used.

SETTING UP THE CONTROL UNIT

Once the correct cables required for your louvre system have been identified, please thread these through the post/beam before beginning installation.

WARNING: Do not connect to the power supply until all cables have been connected.

Connecting the Control Unit:

Once the louvre system has been installed and the motor/lighting needs to be connected, follow these steps:

- 1. Connect “Motor” cables from control unit to the cables which power the motor using the quick connectors.**
- 2. If applicable connect “DC 24V” cables to the white LED lights using the quick connectors to create a circuit.**
- 3. If applicable connect “RGB” cables to the white LED lights using the quick connectors to create a circuit.**
4. Once complete and the remaining installation steps have been completed the power may be turned on.

REMOTE AND RAIN SENSOR CONNECTION

We pair the remote and rain sensor (if included) to the control unit however if either of them are not working, follow these steps:

Remote Connection:

1. Ensure the remote has a battery (if not please insert a CR2450 battery).
2. Turn the power off to the louvre system and complete these steps within 30 seconds.
3. Turn on the power.
4. Hold the U2 button on the back of the remote until the control unit starts beeping.
5. Hold the open (up) button on the remote until the control unit stops beeping.
6. Connection successful.

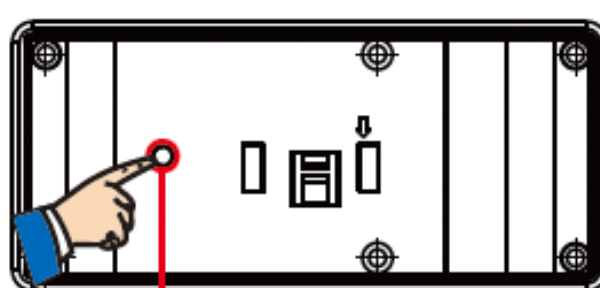
Note: If the **opening direction of the louvre is incorrect** (i.e. open button closes the roof and close button opens the roof). Follow the steps above but instead of holding the open (up) button in step 5, hold the stop button.

REMOTE AND RAIN SENSOR CONNECTION

Rain Sensor Connection:

1. Activate the rain sensor by holding the button on the back for 2 seconds. The LED will light up for 2 seconds.
2. Turn the power off to the louvre system and complete these steps within 30 seconds.
3. Turn on the power.
4. Hold the U2 button on the back of the remote until the control unit starts beeping.
5. Hold the button on the back of the rain sensor until the control unit stops beeping
6. Connection successful.

Note: To test the connection, simply open the louvre roof then add some water to the rain sensor. The rain sensor will automatically close the roof.



Activation/Pairing
Button

REMOTE AND RAIN SENSOR DISCONNECTION

Remote Disconnection:

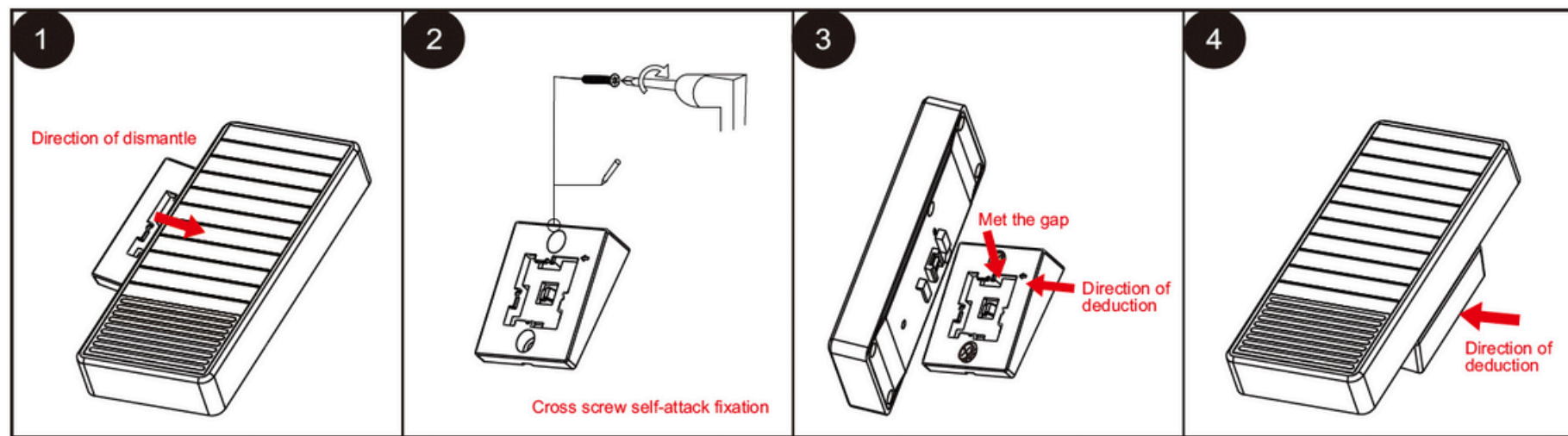
1. Turn the power off to the louvre system and complete these steps within 30 seconds.
2. Turn on the power.
3. Hold the U2 button on the back of the remote until the control unit starts beeping.
4. Hold the close (down) button on the remote until the control unit stops beeping.
5. Disconnection successful.

Rain Sensor Disconnection:

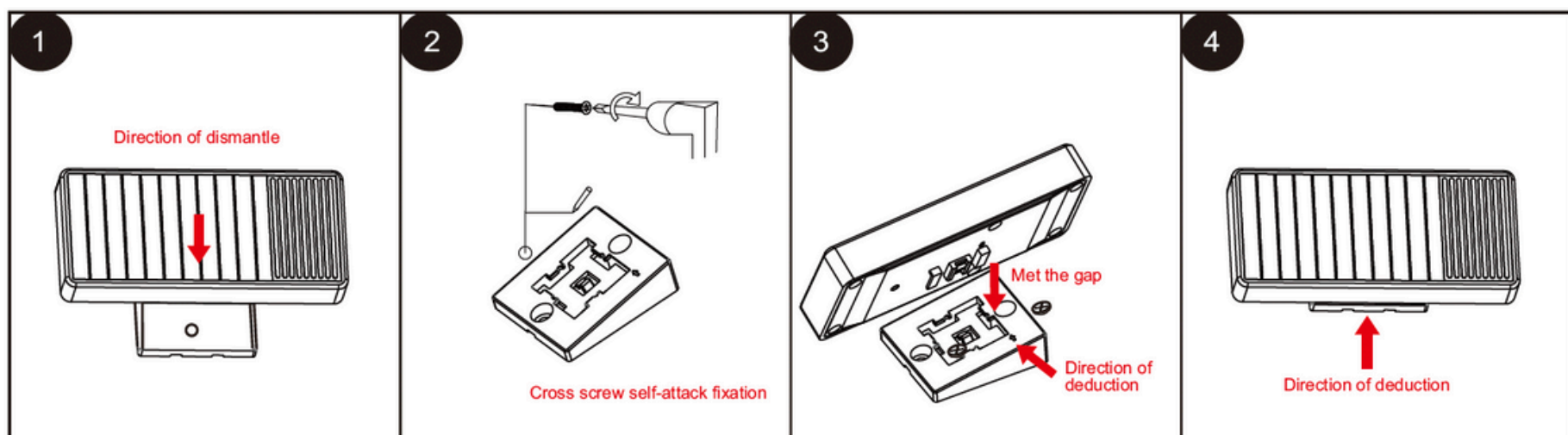
1. Turn the power off to the louvre system and complete these steps within 30 seconds.
2. Turn on the power.
3. Hold the U2 button on the back of the remote for 7 seconds until the control unit stops beeping.
4. Hold the stop button on the remote for 2 seconds followed by the open (up) button for 2 seconds.
5. The control unit will beep once if successfully disconnected.

RAIN SENSOR MOUNTING METHODS

Option: A



Option: B



REMOTE BUTTON USES

Each button use is explained below:

- 1. RGB** - Changes the colour of the RGB lights (only for louvre systems with RGB lights).
- 2. Ambient** - Turns the RGB lights on (only for louvre systems with RGB lights).
- 3. WY** - Redundent.
- 4. Lighting** - Turns the white lights on (only for louvre systems with white lights).
- 5. Left and Right Arrows** - Changes the channel of the remote.
- 6. Open/Stop/Close** - Controls the operation of the louvre blades or motorised blinds (if applicable).

MOTORISED BLIND CONNECTION

Motorised blinds are delivered setup to be controlled by their own individual remote. If you would like to control all blinds from one remote follow these instructions using the remote for the louvre system:

Individual Blind Control:

If you want each blind to be controlled individually, follow these steps.

1. Change the remote for the louvre system to channel 01.
2. Hold the open (up) button on the remote for more than 3 seconds then turn the power on to the single blind you want paired while holding the open (up) button.
3. Press the open (up) button then press the close (down) button.

The single blind will now be paired to channel 01. Repeat these steps with a new blind in a new channel each time. E.g. blind 1 is channel 01, blind 2 is channel 02 and blind 3 is channel 03.

MOTORISED BLIND CONNECTION

Multiple Combined Blind Control:

If you want multiple blinds to be controlled together, follow these steps.

1. Change the remote for the louvre system to channel 01 (or an available channel).
2. Hold the open (up) button on the remote for more than 3 seconds then turn the power on to the blinds you want paired to the channel while holding the open (up) button.
3. Press the open (up) button then press the close (down) button.

The selected blinds which the power was turned on for will now be paired to channel 01 or the selected channel.

COMBINING MOTORISED BLIND POWER SUPPLY

WARNING: A certified electrician must complete this step and only complete this step once the blinds have been paired correctly. Once the power supply has been combined, controlled pairing will no longer work.

TROUBLESHOOTING

Motor or Lights not working:

1. Please check the remote has a battery (if you click a button on the remote it will light up).
2. Check the control unit is receiving a power supply (if the power is turned on, you will hear a beep from the control unit).
3. Check the motor and lighting cables are connected to the correct cables from the control unit.

Lights not working:

If the motor is working but lights are not, follow these steps:

1. Turn the power off to the control unit.
2. Check all LED lights are connected to create a circuit with the two relevant output cables from the control unit.
3. Check the correct button on the remote is being pushed.

Note: It is common for the LED lights to be connected in a circuit but not connected to the control unit. Please check this by ensuring the lights are connected to a labelled output cable from the control unit.

TROUBLESHOOTING

The cables from the control unit don't match the plugs for the lights or motor:

1. Turn the power off to the control unit:
2. Open the post cap on the post which holds the control unit.
3. Check if any of the cables inside the post match the cable you are trying to connect.
4. Once you find the correct cable, thread it through the post and connect it to the relevant component.

RGB lights have a 4 pin connection while white lights have a 2 pin connection.

Motor not working:

If the lights are working but motor is not, follow these steps:

1. Ensure nothing is obstructing the roof from opening.
2. Ensure the control rod is connected to the outside of the louvre blades as per the instruction manual.
3. Ensure the bolt connecting the motor to the driving louvre blade is not fastened too tight.

If this doesn't work, turn off the power and ensure the correct connection from the control unit to the motor.

TROUBLESHOOTING

Remote doesn't have battery:

Please add a CR2450 battery to the remote (not included).

Motorised Blinds not opening:

1. Ensure the blinds have power.
2. Use the correct paired remote. If the remote for the louvre system was paired, please ensure you are using the correct channel by cycling through using the left and right arrows.

Note: Channel C3 controls the louvre system.

Remote or Rain Sensor not working:

Please follow the steps in the guide under the section "Remote and Rain Sensor Connection".

I don't know which cables I need to use:

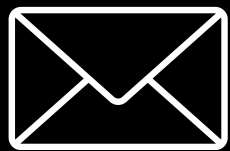
Please follow the steps in the guide under the section "Setting up the Control Unit".

The control unit is setup for a large range of functions. Some cables included may not be required for your louvre system.

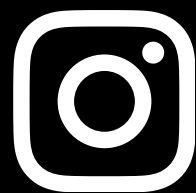
The Louvre Lounge



09 242 2665



INFO@LOUVRELOUNGE.CO.NZ



@LOUVRELOUNGENZ



@LOUVRELOUNGENZ

LOUVRELOUNGE.CO.NZ